

BEROL HOUSE

25 ASHLEY RD, TOTTENHAM HALE, LONDON N17 9LJ

**FIRST AND SECOND
FLOOR**

PROMINENT LOCATION

**EXCELLENT TRANSPORT
CONNECTIONS**

24 HOUR ACCESS

**3 OFFICE UNITS TO LET IN THE
HEART OF TOTTENHAM HALE**

THE UNITS

UNIT 2B+2C - 2,160 SQ FT

UNIT 2D - 1,668 SQ FT

UNIT 3F - 650 SQ FT

LOCATION

Tottenham Hale is about to become home to a whole new neighbourhood, with over 10,000 new homes being delivered over the next few years. With a brand new public square, this promises to be an exciting space for local residents and businesses to grow into.

The bustling main roads and Tottenham Hale Station are only minutes walk away from tranquil nature reserves of Walthamstow Wetlands. The new pedestrian thoroughfare of Berol Link will directly connect Berol Quarter to Down Lane Park.

CONNECTIVITY

Tottenham Hale is one of the best connected places in London, with a 24 hour tube service providing connections to the West End within 16 minutes and just 11 minutes to King Cross.

The refurbished station provides trains to the City of London and Stanstead Airport every 15 minutes and trains to Stratford International only 12 minutes away.

TRAIN

- LIVERPOOL STREET
14 mins
- STRATFORD
12 mins
- HACKNEY DOWNS
6 mins
- 🚆 TOTTENHAM HALE
- LONDON STANSTED AIRPORT
31 mins
- CAMBRIDGE
59 mins

TUBE

- VICTORIA
19 mins
- OXFORD CIRCUS
16 mins
- KINGS CROSS
ST PANCRAS
11 mins
- 🚇 TOTTENHAM HALE
- WALTHAMSTOW CENTRAL
4 mins



THE DETAILS



The historic Berol House has undergone sensitive renovation to deliver modern workspace over the first and second floor. Ideally situated on Ashley Road, Tottenham Hale in a popular area of Tottenham, this modern business centre offers a range of serviced units including open-plan offices, WCs and kitchen.

Unit 2B-2C & Unit 2D rent is exclusive of all main services, electricity, service charges, insurance, and business rates.

Unit 3F rent includes all main services, electricity, insurance, cleaning of common parts – only business rates is excluded.

BUSINESS RATES

UNIT 2B & 2C

Current Rateable Value - £21,750
RV from 1 April 2023 - £23,750
Rates payable from 01.04.2023
(approx. £11,851 per annum)

UNIT 2D

Current Rateable Value - £18,750
RV from 1 April 2023 - £20,250
Rates payable from 01.04.2023
(approx. £10,104 per annum)

UNIT 3F

Current Rateable Value – £7,600
RV from 1 April 2023 – £8,400
Rates payable from 01.04.2023
(approx. £4,191 per annum)

Please note small business rates might apply to this unit.

All parties should rely on their own investigations to confirm the business rates information.

UNIT 2B + 2C

1ST FLOOR
2,160 SQ FT
£49,680 PER ANNUM
AIR-CON

UNIT 3F

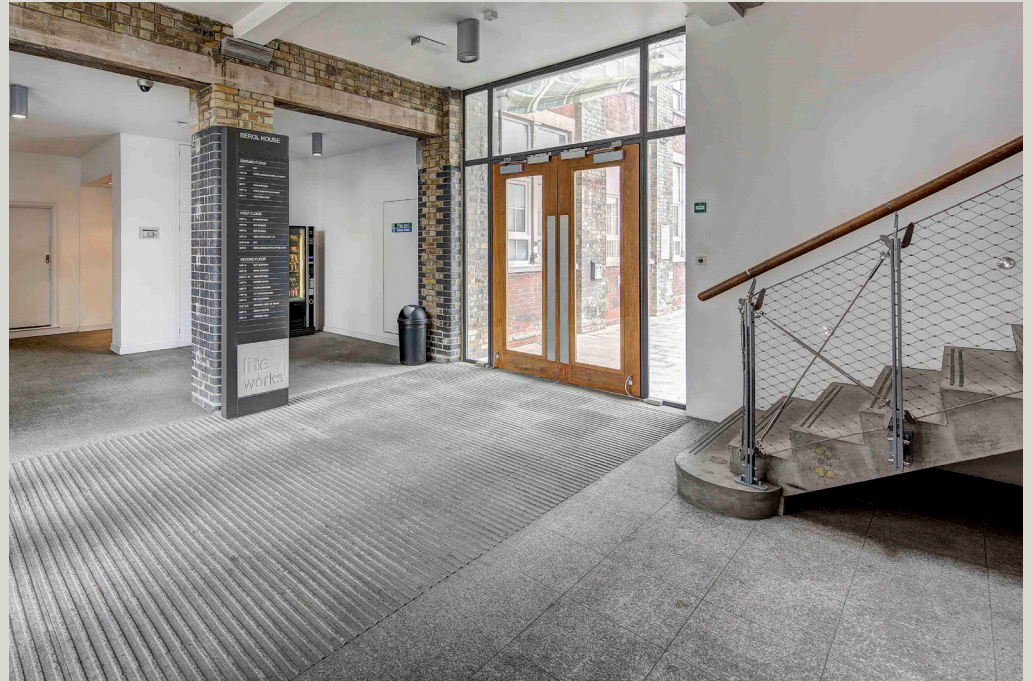
2ND FLOOR
650 SQ FT
£16,250 PER ANNUM

UNIT 2D

1ST FLOOR
1,668 SQ FT
£38,364 PER ANNUM
AIR-CON

ESTIMATED SERVICE CHARGE

The passing service charge is approximately £1.75 to £2.00 per sq. ft. per annum.



LIKE WHAT YOU SEE?

GET IN TOUCH WITH A MEMBER OF OUR TEAM...

Alex Lowry
alex@cfcommercial.co.uk
020 3370 4334

Craig Fisher
craig@cfcommercial.co.uk
020 3370 4334

These particulars are set out as a general outline only for the guidance of intended purchasers or lessees, and do not constitute part of, an offer or contract. All descriptions, dimensions, reference to condition and necessary permissions for use and occupation, and other details are given without responsibility and any intending purchasers or tenants should not rely on them as statements or representations of fact but must satisfy themselves by inspection or otherwise as to each of them. No person in the employment of CF Commercial has any authority to make or give any representation of warranty in relation to this property. Computer Generated Images and proposed uses shown are for indicative purpose only and do not represent the finished specification of the units. All prices are net of VAT unless otherwise stated.
Subject to Contract. January 2023.